



India Meteorological Department
(Ministry of Earth Sciences)

NATIONAL BULLETIN NO. 1

TIME OF ISSUE:1245 HOURS IST

DATED: 30.01.2023

FROM: INDIA METEOROLOGICAL DEPARTMENT (FAX NO. 24643965/24699216/24623220)

TO: CONTROL ROOM, NDM, MINISTRY OF HOME AFFAIRS (FAX.NO. 23093750)

CONTROL ROOM NDMA (FAX.NO. 26701729)

CABINET SECRETARIAT (FAX.NO.23012284, 23018638)

PS TO HON'BLE MINISTER FOR S & T AND EARTH SCIENCES (FAX NO.23316745)

SECRETARY, MOES (FAX NO. 24629777)

H.Q. (INTEGRATED DEFENCE STAFF AND CDS) (FAX NO. 23005137/23005147)

DIRECTOR GENERAL, DOORDARSHAN (23385843)

DIRECTOR GENERAL, AIR (23421105, 23421219)

PIB MOES (FAX NO. 23389042)

UNI (FAX NO. 23355841)

D.G. NATIONAL DISASTER RESPONSE FORCE (NDRF) (FAX NO. 26105912, 2436 3260)

DIRECTOR, PUNCTUALITY, INDIAN RAILWAYS (FAX NO. 23388503)

CHIEF SECRETARY, ANDAMAN & NICOBAR ISLANDS (FAX NO. 03192- 232656)

CHIEF SECRETARY, GOVT. OF TAMIL NADU (FAX NO. 044-25672304)

CHIEF SECRETARY, GOVT. OF PUDUCHERRY (FAX NO. 0413-2337575, 2334145)

Sub: Depression over Southeast & adjoining Southwest Bay of Bengal

The Well-marked Low pressure area over Southeast Bay of Bengal & adjoining East Equatorial Indian Ocean moved west-northwestwards, concentrated into a depression and lay centered at 0830 hours IST of today, the 30th January, 2023 over Southeast & adjoining Southwest Bay of Bengal near latitude 7.7°N and longitude 87.2°E, about 670 km east-southeast of Trincomalee (Sri Lanka) and 880 km east-southeast of Karaikal (India).

It is very likely to move west-northwestwards till evening of 31st January then recurve south-southwestwards and cross Sri Lanka coast in the forenoon of 01st February 2023.

Forecast track and intensity are given below:

Date/Time(IST)	Position (Lat. °N/ long. °E)	Maximum sustained surface wind speed (Kmph)	Category of cyclonic disturbance
30.01.23/0830	7.7/87.2	45-55 gusting to 65	Depression
30.01.23/1730	7.9/85.8	45-55 gusting to 65	Depression
31.01.23/0530	8.1/84.6	45-55 gusting to 65	Depression
31.01.23/1730	8.0/83.5	45-55 gusting to 65	Depression
01.02.23/0530	7.3/82.3	45-55 gusting to 65	Depression
01.02.23/1730	6.5/81.5	40-50 gusting to 60	Depression

Warnings:

(i) Rainfall (warning graphics enclosed)

- ❖ Light/moderate rainfall at most places with isolated heavy rainfalls very likely over south Tamil Nadu on 1st and 2nd February.

(ii) Wind warning:

- ❖ **Squally wind with speed reaching 45-55 kmph gusting to 65 kmph** is very likely over Southeast Bay of Bengal on 30th January.
- ❖ **Squally wind with speed reaching 45-55 kmph gusting to 65 kmph** is likely over Southwest Bay of Bengal during 30th January to 1nd February. It would gradually decrease becoming **40-50 kmph gusting to 60 kmph** on 2nd February.
- ❖ **Squally wind with speed reaching 45-55 kmph gusting to 65 kmph** is likely along & off Sri Lanka coast during 30th January to 1nd February. It would gradually decrease becoming **40-50 kmph gusting to 60 kmph** on 2nd February.
- ❖ **Squally wind speed reaching 40-50 kmph gusting to 60 kmph over** Gulf of Mannar and Comorin area and along & off south Tamil Nadu & Karaikal coasts during 1st to 2nd February.
- ❖ **Strong wind speed reaching 30-40 kmph gusting to 50 kmph** along & off north Tamil Nadu & Puducherry coasts during 1st to 2nd February.

(iii) Sea condition

Sea condition is likely to be rough to very rough

- ❖ over Southeast Bay of Bengal on 30th January.
- ❖ over Southwest Bay of Bengal during 30th January to 2nd February.
- ❖ Along & off Sri Lanka coast during 31st January to 2nd February.
- ❖ over Gulf of Mannar and adjoining Comorin area and along & off south Tamil Nadu coast during 1st and 2nd February

Sea condition is likely to be moderate to rough along and off north Tamil Nadu & Puducherry coasts during 1st and 2nd February.

(iv) Fishermen Warning (warning graphics enclosed)

Fishermen are advised not to venture into:

- ❖ Southeast Bay of Bengal from 30th January.
- ❖ Southwest Bay of Bengal, Gulf of Mannar, Comorin Area and along & off Sri Lanka and south Tamil Nadu & Karaikal coasts till 2nd February.

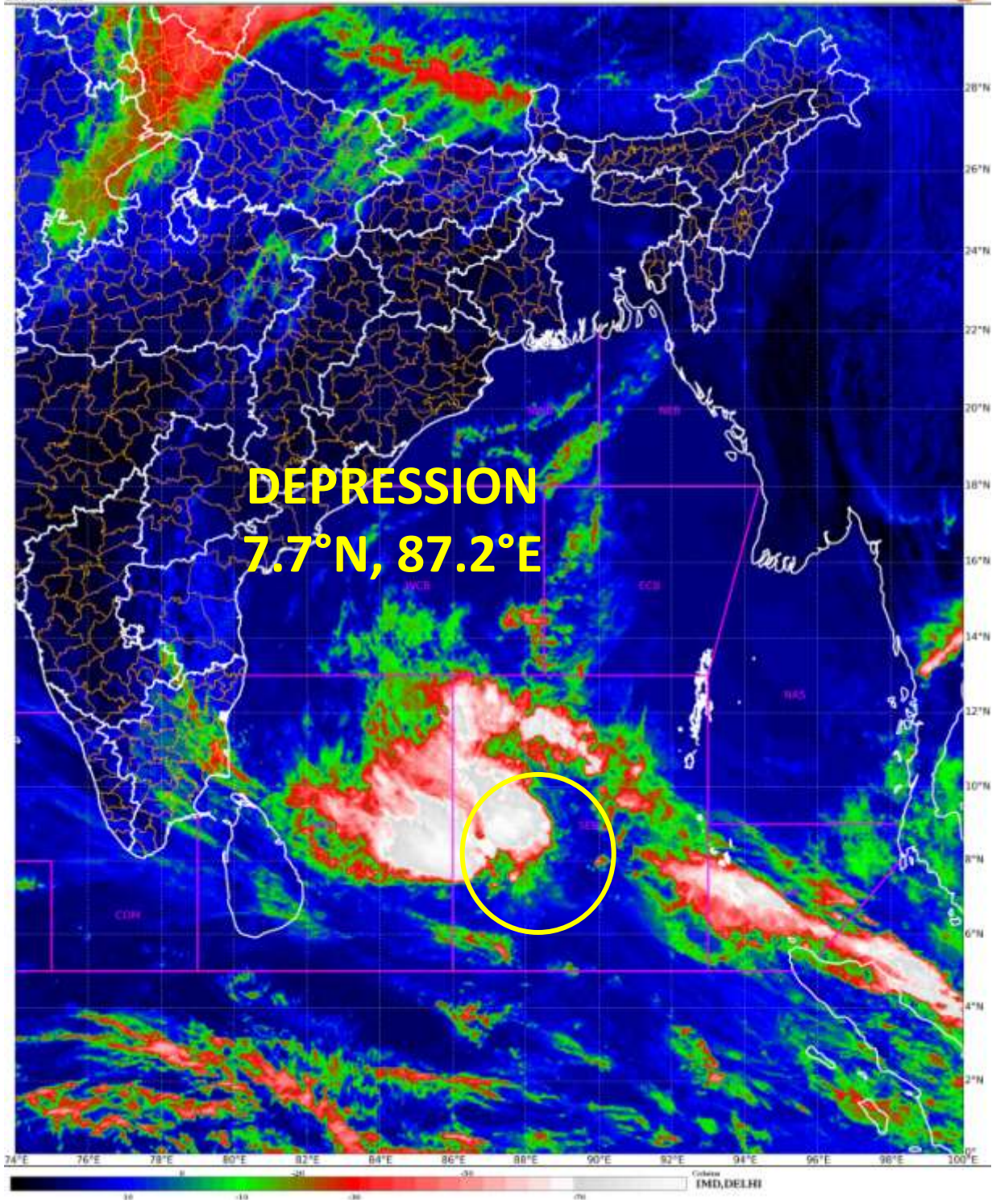
Fishermen out at sea off Tamil Nadu coasts are advised to return to the coasts by 31st January.

The system is under continuous surveillance and the next message will be issued at 1430 hours IST of today, the 30th January, 2023.

(Ananda Kumar Das)
Scientist F, Cyclone Warning, New Delhi

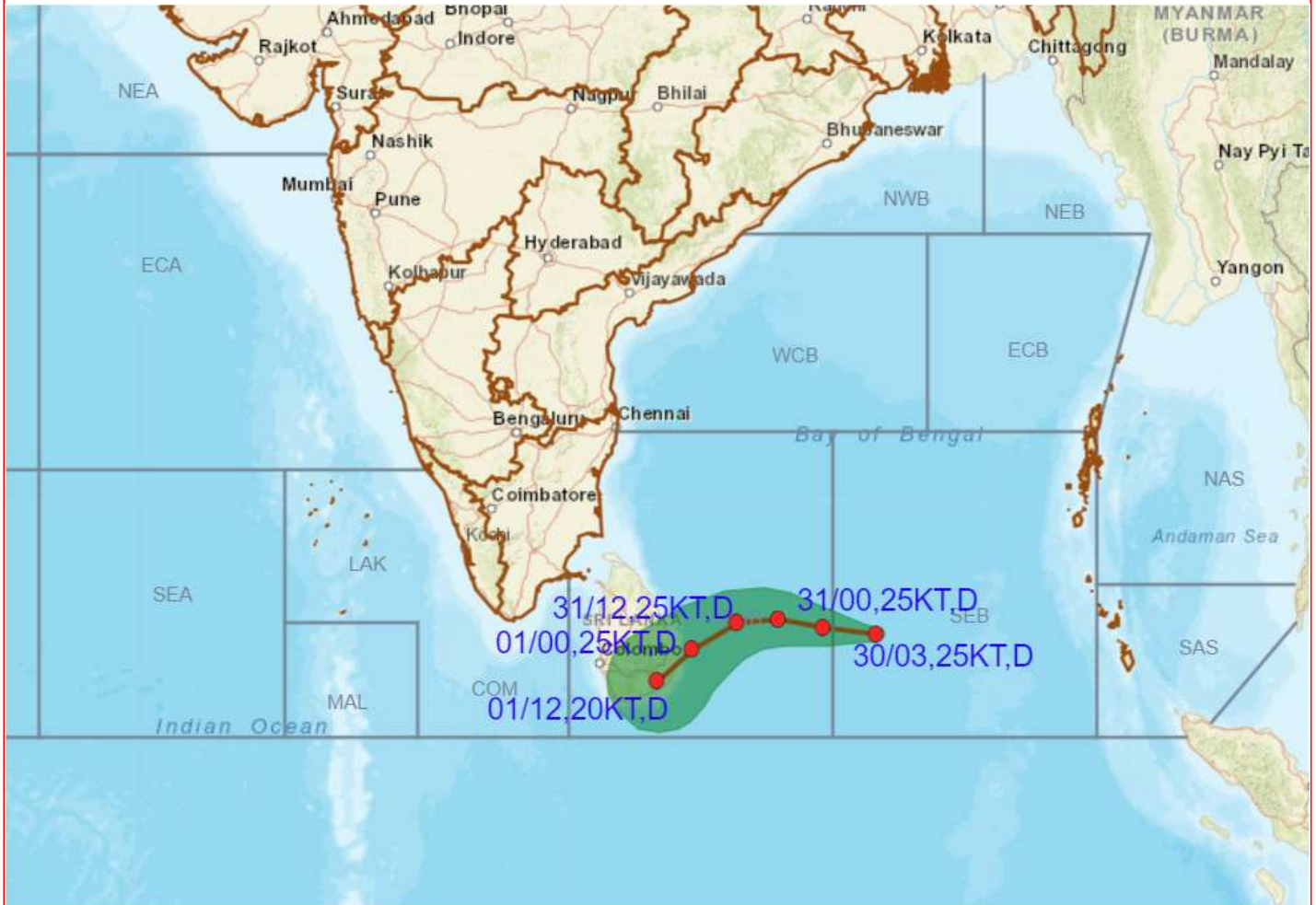
Copy to: ACWC Kolkata/ ACWC Chennai/ CWC Bhubaneswar/CWC Visakhapatnam/MO Port Blair

LEGEND: Heavy Rainfall: 64.5 to 115.5mm, **Very Heavy Rainfall:** 115.6 to 204.4mm **Most Places:** more than 76% of total stations, **Isolated Places:** Less than 25% of total





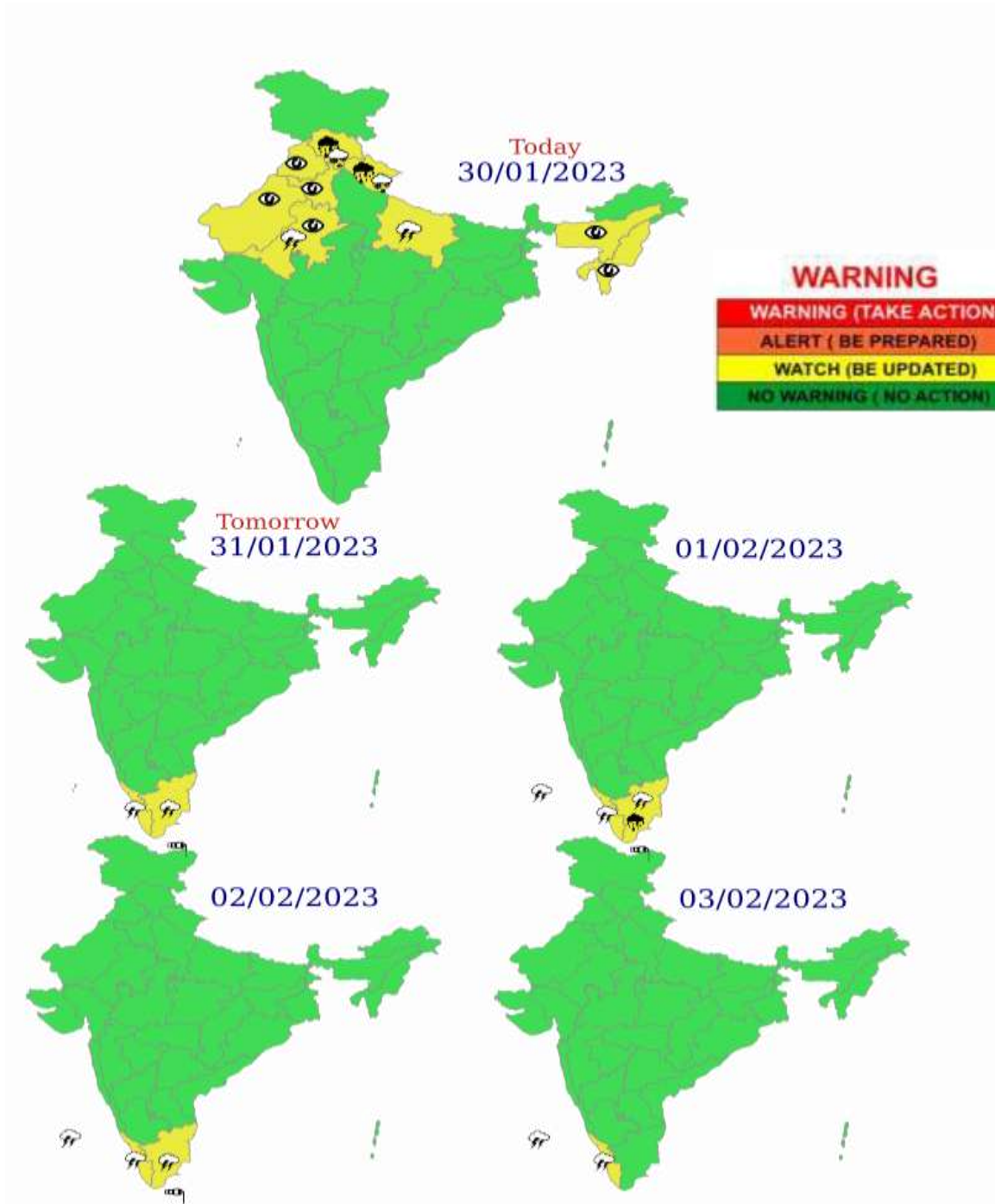
OBSERVED AND FORECAST TRACK OF DEPRESSION OVER SOUTHEAST AND ADJOINING SOUTHWEST BAY OF BENGAL BASED ON 0300 UTC OF 30th JANUARY, 2023.



DATE/TIME IN UTC
 IST=UTC + 0530
 L: LOW PRESSURE AREA
 WML: WELL MARKED LOW PRESSURE AREA
 D: DEPRESSION (17-27 KT)
 DD: DEEP DEPRESSION (28-33 KT)
 CS: CYCLONIC STORM (34-47 KT)
 SCS: SEVERE CYCLONIC STORM (48-63KT)
 VSCS: VERY SEVERE CYCLONIC STORM (64-89 KT)
 ESCS: EXTREMELY SEVERE CYCLONIC STORM (90-119 KT)
 SuCS: SUPER CYCLONIC STORM (\geq 120 KT)

- LESS THAN 34 KT
- 34-47 KT
- \geq 48 KT
- OBSERVED TRACK
- FORECAST TRACK
- CONE OF UNCERTAINTY

Multi hazard Warning Graphics



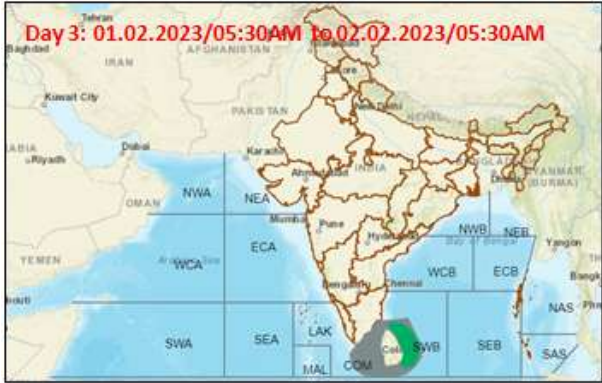
 Heavy Rain
 Strong Winds
 Frost

 Heavy Snow
 Visibility
 Cold Wave

 Thunderstorm
 Cyclone
 Heat Wave

 Dust Storm
 Squall/ Hail
 Sea State

Fishermen warning graphics



Squally WX with wind speed 40-45 kmph gusting to 55 kmph

Squally wind speed 45-55 kmph gusting to 65 kmph

Fishermen are advised not to venture into the marked areas.